

PRODUCT CATALOG



**YOUR PAYMENTS,
OUR SOLUTIONS**

 +1 800-571-8370



The VALOR PAYTECH logo consists of a blue shield with a white 'V' inside, followed by the word "VALOR" in large, bold, blue, sans-serif capital letters. The letter 'O' in "VALOR" contains a white icon of a hand holding a smartphone with a signal wave. Below "VALOR" are the letters "PAYTECH" in a smaller, blue, sans-serif font. Underneath the entire logo is a horizontal line, and below that line is the tagline "THE FUTURE OF PAYMENT TECHNOLOGY" in a blue, sans-serif font.

We understand the importance of reliable business solutions to improve your business. That's why we offer innovative, advanced, and secure all-in-one payment technology solutions for ISOs, merchants, and new business owners.

Our commitment to excellence means continually improving our software systems and payment devices to provide you with the gold standard for intelligent, hassle-free transactions.



VALOR POS

VP 500

Taps into all the advantages Android has to offer, bringing familiar smartphone-like capabilities that enhance the customer experience and empower merchants to modernize and grow their businesses.



VL 100

The ultimate countertop solution, featuring a user-friendly display and advanced technology to improve the customer experience.

RCKT MOBILE POS

This perfect mini portable payment device accepts EMV and fits in your pocket. Additionally, it includes a PIN pad for added security.



REVOLUTIONIZING PAYMENTS
ONE PAYMENT ECOSYSTEM

VP 500



SPECIFICATIONS

Processor	Cortex Quad-core A53, 1.4GHz
Security Processor	ARMv7-M security core, 192MHz
Operating System	Android 7.1.2
Flash/RAM	8GB/1GB
Micro-SD Socket	(Up to 32 GB)
Display	5-inch TFT full color LCD display, resolution of 1280 x 720, capacitive multi-touch screen, support electronic signature
Magnetic Card Reader	Triple track, bi-directional, conforming to ISO 7810/7811/7813
Smart Card Reader	EMV L1/L2, conforming to ISO 7816, 1.8V/3V/ 5V, synchronous & asynchronous, T=0 & T=1
Contactless Card Reader	EMV Contactless L1, conforming to ISO 14443 Type A/B, Mifare , Felica
Positioning	GPS, GLONASS, BEIDOU
Wireless Communication	4G / 3G / 2G WIFI (802.11 b/g/n) Bluetooth 2.1/4.2
Audio	1 x speaker, 1 x microphone, support audio recording and media play
Keypad	Secure virtual keypad for PIN entry, 1 x power button, 1 x function key
Printer	High-speed thermal printer, 80 mm/s Paper roll diameter: 40mm Paper width: 58mm

VP 500



SPECIFICATIONS (continued)

Camera	0.3 MP front camera, support 1D/2D code payment 2 MP autofocus rear camera with flashlight, support 1D/2D code payment
Peripheral Ports	1 x Micro USB (OTG), 1 x DC Jack
Card Slots	2 x SIM, 1 x SAM, 1 x SD (1 x SIM, 2 x SAM, 1 x SD)
Battery	Li-ion battery, 7.2V/2600mAh/18.7Wh (Equal to 3.6V/5200mAh)
Power supply	Input: 100-240V AC 50/60Hz, 0.3A Output: 5.0V DC, 2.0A
Dimensions (mm)	190(L) x 81(W) x 54.9(H)
WL-HUB	RS232 (RJ11), 2 x USB-A, Ethernet (RJ45)
Weight	440g including battery
Operating Temperature	0°C~40°C (32°F~104°F)
Storage Temperature	-20°C~60°C (-4°F~104°F)
Relative Humidity	5%~93% (Non-condensing)
Docking Station	Multi-function base: Charging, Ethernet, Bluetooth, Wi-Fi access point, 1 x USB-A, 1 x RS232
Certifications	PCI PTS 6.x, EMV L1/L2, EMV Contactless L1, PayPass, payWave, American ExpressPay, Discover D-PAS, UnionPay QuickPass, JCB, TQM, CE, RoHS

VL 100



SPECIFICATIONS

Processor	32-bit secure microprocessor running a powerful Linux-based operating system
Flash/DDRDRAM	128 MB/64 MB (up to 256 MB/128 MB)
Micro-SD Socket	Yes
Display	3.5" Color TFT LCD 320 x 480 Pixels
Touchscreen	Yes
Magnetic Stripe	ISO 7810, 7811, 7813 Triple track, bi-directional
Contact Card (User Card)	ISO 7816 ID-1 1.8V/3V/5V T=0, T=1
Contactless (Optional)	ISO 14443 Type A, B ISO 18092 NFC Mifare & Sony FeliCa Working Frequency 13.56 MHz
Wireless	Wi-Fi
Wired	Ethernet
LED - Contactless	No
Audio Buzzer	Yes
Standard Keys	15
Function Keys	No

VL 100



SPECIFICATIONS (continued)

Printer	57 mm x 50 mm, 100 mm/sec
Software	SDK KMS TMS GDB CTOS library ISO 8583 library Crypto library
Crypto	TRNG DES T'DES AES RSA MK/SK DUKPT T'DES DUKPT
Power Adapter	DC 9V/4A
Dimensions (mm)	190(L) x 78(W) x 78(H)
Weight	350 g
Contact Card (User Card)	ISO 7816 ID-1 1.8V/3V/5V T=0, T=1
Operating Temperature	0°C to 50°C
Storage Temperature	-20°C to 70°C
Relative Humidity	5% to 90% non-condensing
Certifications	PCI PTS 4.x EMV L1/L2 payWave PayPass ExperssPay D-PAS Interac Flash J-Speedy FeliCa UnionPay UICS TQM PBOC L1/L2

RCKT MOBILE POS



SPECIFICATIONS

CPU	32-bit high performance secure processor
OS	RTOS (proprietary)
Memory Required	512KB SRAM, 512KB+ 4 MB FLASH
Memory Optional	512KB SRAM, 512KB+ 8 MB FLASH
Display	1.7-inch monochrome LCD display, resolution of 128 x 64 with backlight
Wireless Communication	Bluetooth 4.2
Magnetic Card Reader	Triple track, bi-directional, conforming to ISO 7810/7811/7813
Smart Card Reader	EMV L1/L2, conforming to ISO 7816, 1.8V/3V/ 5V, synchronous & asynchronous, T=0 & T=1
Contactless Card Reader	EMV Contactless L1, conforming to ISO 14443 Type A/B, Mifare , Felica
Audio	Built-in buzzer
Peripheral Ports	1 x TYPE-C for charging and communication
Keypad	10 x alphanumeric keys, 5 x function keys, 1 x Power button
Battery	Li-ion battery, 3.7V/470mAh/1.74Wh
Power Supply	5V DC, 0.5A
Dimensions (mm)	102.7(L) x 55.8(W) x 16.5(H)

RCKT MOBILE POS



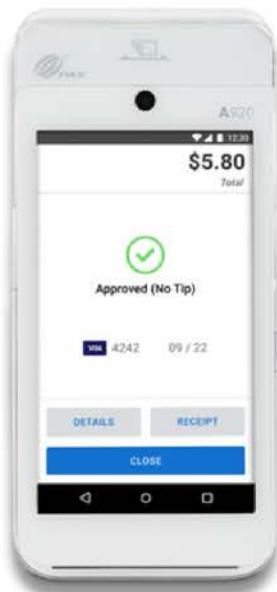
SPECIFICATIONS (continued)

Weight	100g including battery
Operating Temperature	0°C~40°C (32°F~104°F)
Storage temperature	-20°C~70°C (-4°F~158°F)
Relative humidity	10%~90% (Non-condensing)
Certifications	<p>PCI PTS 5.x, EMV L1/L2, EMV Contactless L1, PayPass, payWave</p> <p>American ExpressPay, Discover D-PAS, TQM, CE, RoHS</p>

SwipeSimple

We are committed to understanding the needs of small businesses in accepting payment. We are passionate about making payment acceptance effortless and simple. We push ourselves to create cutting-edge solutions designed to help small businesses grow.

We listen to our customers. And we learn. We are agile in solving problems that result in great technology, easy-to-use merchant experience, and simple deployment.



SWIPE SIMPLE BACKUP

ARIES 8

Easily customize your setup with USB-connected peripherals, assign different tax rates as needed, and modify items added to the cart.



PAX A920

Accept payments and print receipts with SwipeSimple Terminal, a safe and convenient all-in-one device.



SOFTWARE

Works with the devices you already own. Take in-person payments on any iPhone, iPad, or Android phone or tablet. Send invoices and payment links via email or text

POWER OUTAGE? NO PROBLEM!
KEEP YOUR BUSINESS RUNNING SMOOTHLY



RESTAURANT/FOOD TRUCK MOVIL

STATION 2



**A920
Smartmobile**

**KITCHEN/BAR
SRP-330II**



RESTAURANT

STATION 1



HIT PLUS

**HONEYWELL MS9520
VOYAGER BARCODE
READER**



SRP-330II

**PAX A35 PIN Pad,
PAX SP30 PIN**



**CC-410 CASH
DRAWER**

RESTAURANT

STATION 2/3



HIT PLUS

**PAX A35 PIN Pad,
PAX SP30 PIN**



SRP-330II

**KITCHEN/BAR
SRP-330II**



RESTAURANT/FOOD TRUCK MOVIL

STATION 1



HIT PLUS

**HONEYWELL MS9520
VOYAGER BARCODE
READER**

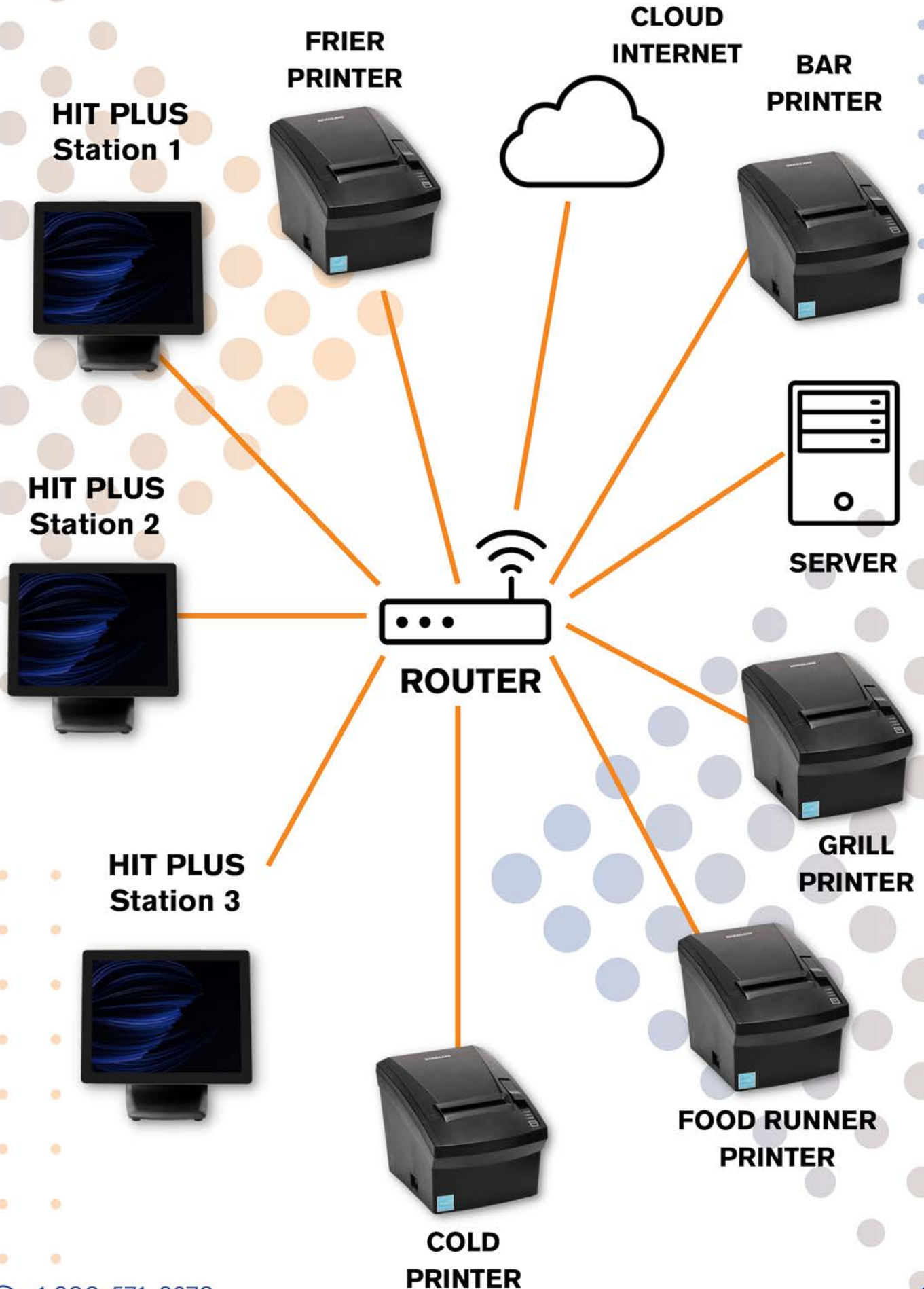


SRP-330II

**PAX A35 PIN Pad,
PAX SP30 PIN**



**CC-410 CASH
DRAWER**



HIT PLUS / RAPIDO

MONITOR ADD ONS

THE PERFECT FOOD TRUCK ADD ON

"Enhance your customers' experience with our touchscreen monitors, available as add-ons for any setup."



9.7" Touch Monitor

15" Touch Monitor



STATION 1



HIT RAPIDO



**9400i BARCODE
SCANNER**



SRP-330II



**PD-II 15lb DUAL
RANGE**



**CC-410 CASH
DRAWER**



**PAX A35 PIN PAD,
PAX SP30 PIN**



**ORBIT
SCANNER**



**CUSTOMER
DISPLAY**

SRP-330II





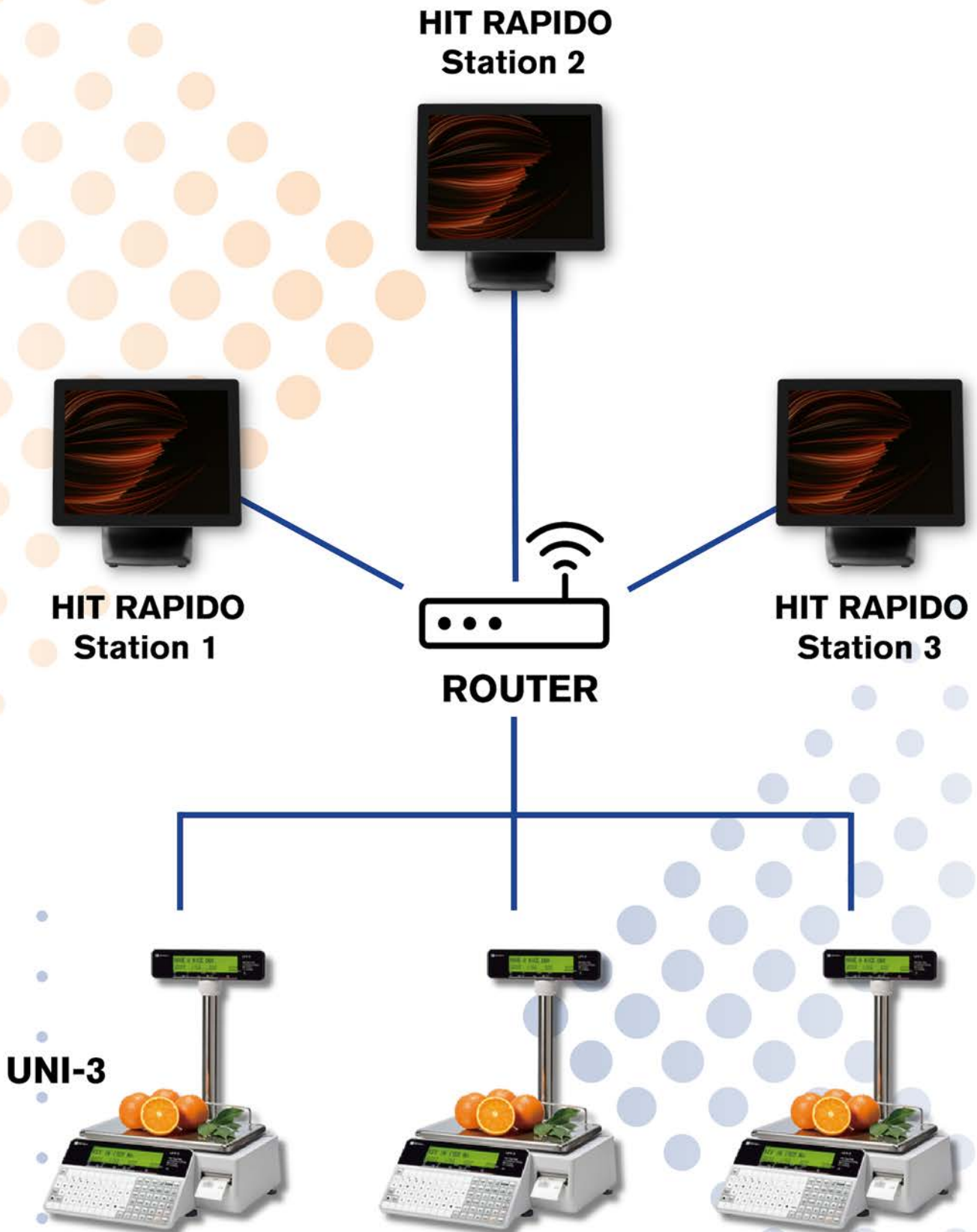
**HIT
RAPIDO**



UNI-3



UNI-5 B



HIT PLUS



SPECIFICATIONS

CPU & Chipset	Intel® Celeron® Processor
Memory	DDR4L 4GB SoDIMM (Up to 16GB)
Storage	2.5", SATA-III SSD 128GB (Up to 512GB) (Optional RAID; Ask for details)
Display	15", 1024 x 768, 24bit, Luminance : 350 cd/m2, Backlight : LED
HDMI	1EA (Intel® UHD Graphics)
LAN	1EA (Realtek Gigabit LAN)
Serial	5EA (DSUB-9P x 2EA / RJ-45 x 2EA / RJ- 11 x 1EA(MSR))
USB	USB 3.0 x 4EA(I/O), USB 2.0 x 2EA(Rear)
Audio	1EA (Line Out)
Speaker	1EA (1W)
Cooler & FAN	Fanless
Cash Drawer	1EA (RJ-11) (DK Port Default : 24V/GPIO)
Power Adaptor	60[W] Adaptor, Input AC 100~240V/50~60HZ, DC 24V/2.5A (DIN 3-Pin)
Dimension (W x L x H) (mm)	430(W) x 410(L) x 310(H) (BOX)
Weight (kg)	4.8kg

SRP-330II



SPECIFICATIONS

Print Method	Direct Thermal
Print Speed	Up to 220 mm/sec
Print Resolution	SRP-330II: 180 dpi SRP-332II: 203 dpi
Print Width	Up to 72 mm
Sensor	Paper End, Cover Open
Media Type	Receipt
Media Width	80 mm. Optional 58 mm (N type)
Media Roll Diameter	Up to 80 mm
Media Thickness	0.05 ~ 0.08mm
Supply Method	Easy Paper Loading
Dimensions (WxDxH)	145x198x146mm (5.72 x 7.79 x 5.74 inch)
Weight	1.37 kg (3.02 lbs.)
Electrical	EnergyStar Certified, External Power Adaptor 100-240V AV, 50/60Hz
Drawer Port	2 ports (via y-type adaptor)
NV Image Memory	768 Kbytes (Mono)
Receive Buffer	4 Kbytes

SRP-330II



SPECIFICATIONS (continued)

User Define Buffer	12 Kbytes
Interface	1 USB V2.0 FS + Ethernet + Serial 2 USB V2.0 FS + Serial 3 USB V2.0 FS + Parallel 4 USB V2.0 FS + SD
Temperature	Operating: 0 ~ 40°C (32 ~ 104°F) Storage: -20~60°C(-4~140°F)
Humidity	Operating: 10 ~ 80% RH Storage: 10 ~ 90% RH
Thermal Print Head (TPH)	150km
Auto Cutter	1.5 Million Cuts
Specified Paper	TF50KS-E (Paper thickness: 65μm) : Nippon Paper industries Co., Ltd. - PD 150R (Paper thickness: 75μm) : New Oji Paper Mfg, Co., Ltd - PD 160R (Paper thickness: 75μm) : New Oji Paper Mfg, Co., Ltd. - P350 (Paper thickness: 62μm) : Kansaki Specialty Paper, Inc. (USA)
Emulation	BXL / POS
Driver/Utility	Windows Driver, OPOS / JPOS Driver, Linux / Mac CUPS Driver, Virtual COM USB / Ethernet Driver, Utility Program
SDK/Plugin	Android / iOS / Windows SDK, Linux SDK, Xamarin SDK, Chrome SDK, Cordova Plugin
Application	mPrint App (iOS)

SRP-330II



SPECIFICATIONS (continued)

Character	FontA:12x24FontB:9x17FontC:9x24 KOR, CHN, JPN: 24 x 24
Characters per Line	SRP-330II: - Font A: 42 Font B, C: 56 KOR, CHN, JPN: 21 SRP-332II: - Font A: 48 Font B, C: 64 KOR, CHN, JPN: 24
Character Sets	Alphanumeric: 95 Extended Graphics:128 x 33 page International: 32
Graphics	Supporting user-defined fonts, graphics, formats, and logos
Barcode Symbologies	1D: Coda Bar, Code39, Code93, Code128, EAN-8, EAN-13, ITF, UPC-A, UPC-E 2D: Data Matrix, PDF417, QR Code
Standard	2 inch Partition (58 mm), USB A-B Cable 1.8m
Optional	External buzzer, B-Melodist

HONEYWELL MS9520 VOYAGER BARCODE READER



SPECIFICATIONS

Dimensions (LxWxH)	198 mm x 78 mm x 56 mm (7.8" x 3.1" x 2.2")
Weight	149 g (5.3 oz)
Input Voltage	5 VDC + 0.25 V
Operating Power	825 mW (165 mA @ 5 V)
Standby Power	600 mW (120 mA @ 5 V)
Host System Interfaces	USB, RS232, Keyboard Wedge, IBM 46xx (RS485), OCIA, Laser Emulation, Light Pen Wand Emulation
Operating Temperature	0°C to 40°C (32°F to 104°F)
Storage Temperature	-40°C to 60°C (-40°F to 140°F)
Humidity	5% to 95% relative humidity, non-condensing
Drop	Designed to withstand 1.5 m (5') drops
Environmental Sealing	Sealed to resist airborne particulate contaminants
Light Levels	4842 Lux
Scan Pattern	Single scan line
Scan Speed	72 scan lines per second
Scan Angle	Horizontal: 50°
Print Contrast	35% minimum reflectance difference
Pitch, Skew	68°, 52°
Decode Capabilities	Reads standard 1D and GS1 DataBar symbologies
Warranty	5 year factory warranty

PAX A35 PIN Pad



SPECIFICATIONS

Operating System	PayDroid Powered by Android 10.x
Processor	Quad-core Cortex A53, 1.6GHz
Memory	8GB Flash + 1GB DDR, 128GB MicroSD Optional
Card Readers	Chip & PIN NFC Contactless Magnetic Stripe
Cameras	0.3MP Fixed Front-Facing, 5MP Fixed Front-Facing Optional
Displays	4" WVGA 480 x 800 Pixels, Capacitive Touch Screen
Comms Configurations	RS232 Ethernet (Gigabit Optional) USB 2.0 Wi-Fi® (2.4GHz/5GHz) + Bluetooth® (4.2/5.0) (Optional)
Adapter	Input: 100-240VAC, 50Hz/60Hz Output: 5.0V DC, 1.0A
SIM / SAM	2 PSAM
Keys / Buttons	13 keys: 0-9 Enter Clear Cancel, Back-Lighting (Optional)
Audio	1 Speaker 1 Audio Jack
Ports	Multi-Functional Port 1 Kensington MicroSD (Optional)
Physical	163.69mm x 76.90mm x 30.10mm(L x W x H) 260g

PAX A35 PIN Pad



SPECIFICATIONS (continued)

Environmental	0°C ~ 50°C (32°F ~ 122°F) Operating Temperature -20°C ~ 70°C (-4°F ~ 158°F) Storage Temperature 5% ~ 93% Relative Humidity, Non-Condensing
Accessories	Multiple Cabling Options Stand
Certifications	PCI PTS 6.x, SRED EMV L1 & L2 EMV Contactless L1 Visa payWave MasterCard Contactless UPI qUICS Amex ExpressPay Discover D-PAS JCB J/Speedy Interac Flash MasterCard TQM UL FCC IC CE RoHs

PAX A920 PIN Pad



SPECIFICATIONS

Memory	1GB RAM + 8GB Flash, Micro SD Card Slot Supports up to 32GB
Processor	ARM Cortex A7 1.1GHz 4 core processor Cortex-M4
Card Reader Types	Magnetic Card Reader Smart Card Reader Contactless
Dual Cameras	0.3 MP Fixed Focus Front Camera 5 MP Auto Focus Rear Camera
Communications	4G LTE Wi-Fi Short range wireless communication
Communication Ports	Dual SIM 1 x Micro USB
External Base Options	Charging Base Multi-Functional Wireless Base
Physical	L x W x H (inches): 6.92 x 3.07 x 2.24 Weight: 11.3 oz (including battery)
Certifications	PCI PTS 5.x SRED, EMV® L1 & L2, Visa payWave, Mastercard PayPass, American Express expresspay, Discover D-PAS, Interac Flash, JCB J/ Speedy UnionPay qUICS, PTCRB

CC-410 Cash Drawer



SPECIFICATIONS

<p>Features</p>	<ul style="list-style-type: none"> ▪ 16" cash drawer ▪ Al steel construction with painted front ▪ Black powder coated finish ▪ Three function center key-lock (manual release, electronic r e l e a s e ,and drawer lock) ▪ Standard 8 coin/5 bill removable money tray insert with "nesting" coin section ▪ Media storage area under coin section ▪ 2 Media Slots ▪ Bottom exit cable (included) ▪ "Secret lever" manual release on bottom plate ▪ Manual release key-lock at center-front ▪ Compulsory (microswitch) switch standard
<p>Available Interfaces</p>	<ul style="list-style-type: none"> ▪ Any Receipt Printer Interface ▪ Any ECR/POS System Interface
<p>Options</p>	<ul style="list-style-type: none"> ▪ Under-the-counter mounting brackets P/N CC-410-B2-BRACKET ▪ Optional Locking Lid P/N CC-410-B2-LID ▪ Replacement Cables P/N CC-410-B2-EPSON-NCMS (Standard) P/N CC-410-B2-EPSON-NOMS P/N CC-410-B2-STAR

CC-410 Cash Drawer



SPECIFICATIONS (continued)

<p>Specifications</p>	<ul style="list-style-type: none"> ▪ Dimensions: 16.1" (W) x 16.3" (L) x 4.48" (H)* * 4.08" (H) without rubber feet ▪ Ship Weight: Approx. 17 lbs ▪ 2 year warranty ▪ Drawer release solenoid 24v <p>Available wired for any receipt printer or ECR/POS system</p>
<p>Available Money Trays</p>	<ul style="list-style-type: none"> ▪ 5 coin/5 bill removable money tray insert (Option) P/N CC-410-B2-INSERT-5/5 ▪ 8 coin/4 bill removable money tray insert (Canadian standard) P/N CC-410-B2-INSERT-8/4 ▪ 8 coin/5 bill removable money tray insert (U.S. standard) P/N CC-410-B2-INSERT-8/5



HIT RAPIDO



SPECIFICATIONS

CPU & Chipset	Intel® Core™ i3-1115G4 Processor (6M Cache, Up to 4.10 GHz) Intel® Core™ i5-1135G7 Processor (8M Cache, Up to 4.20 GHz) System on Chip (SoC)
Memory	DDR4L 4GB SoDIMM (Up to 16GB)
Storage	2.5", SATA-III SSD 128GB (Up to 512GB) (Optional RAID; Ask for details)
Display	15", 1024 x 768, 24bit, Luminance : 350 cd/m2, Backlight : LED
Touch Panel	15", Projective Capacitive Touch (Bezelless)
HDMI	1EA (Intel® UHD Graphics)
LAN	1EA (Realtek Gigabit LAN)
Serial	5EA (DSUB-9P x 2EA / RJ-45 x 2EA / RJ-11 x 1EA (MSR))
USB	USB 3.0 x 4EA(I/O), USB 2.0 x 2EA (Rear)
Audio	1EA (Line Out)
Speaker	1EA (1W)
Cooler & FAN	Fanless
Cash Drawer	1EA (RJ-11) (DK Port Default : 24V/GPIO)
Power Adaptor	96[W] Adaptor, Input AC 100~240V/50~60HZ, DC 24V/4A (DIN 3-Pin)
Dimension (W x L x H) (mm)	430(W) x 410(L) x 310(H) (BOX)
Weight (kg)	4.8kg

9400i BARCODE SCANNER



SPECIFICATIONS

1D / Linear Codes	Autodiscriminates all standard 1D codes including GS1 DataBar™ linear codes.
Stacked Codes	EAN/JAN Composites; GS1 DataBar Composites; GS1 DataBar Expanded Stacked; GS1 DataBar Stacked; GS1 DataBar Stacked Omnidirectional; MicroPDF417; PDF417; UPC A/E Composites
2D Codes	Aztec Code; Data Matrix; QR Code, Micro QR Code
Digital Watermarks	Optional support for Digimarc® Barcode (9400i series only)
AC Power Requirements	AC Input: 100 - 240 VAC, 50-60 Hz Power Consumption: Operating (Nominal): 12 Watts Sleep Mode: 11 Watts
Ambient Light	0-86,080 lux
ESD Protection (Air Discharge)	25 kV
Humidity (Non-Condensing)	5 - 95%
Temperature	Operating: 10 to 40 °C / 50 to 104 °F Storage/Transport: -40 to 70 °C / -40 to 158 °F
Auxiliary Ports	Powered RS-232; Remote Scale Display; EAS Controller Ports; Sensomatic, Interlock; Powered USB Host (Type A) (x2)
Multi-Interface	RS-232 / IBM 46XX / USB Multi-Interface: OEM (IBM) USB Plus Power (Scanner and Scale); RS-232 (Scanner) / RS-232 (Scale); RS-232 (Scanner) or Single Cable RS-232 (Scanner and Scale)

9400i BARCODE SCANNER



SPECIFICATIONS (Continued)

Remote Management Capabilities	Diagnostic Reporting; WMI (OPOS and JavaPOS) and MBeans (JavaPOS) compliant Host Download; Supports IBM Systems Director®, Wavelink® Avalanche® and other ERP management solutions
All-Weights Scale Platter	Integrated horizontal and vertical scale platter surfaces increase active weighing area for easy, accurate weighing of large items.
ScaleSentry Shrink Monitoring / Prevention System	Configurable audio / visual indicators identify items placed outside weighing surface
EAS Features	Sensormatic: Datalogic SmartSentry™ Firmware technology interfaces with the Sensormatic AMB- 9010/IPS and ScanMax® Pro EAS Deactivation Controllers with AMB 5194 antenna; Good Read / EAS Status Indicators
Magellan Scale Technology	Checkpoint Systems: Integrated EAS hardware will work with Counterpoint IX and Evolve D11 models; Sensormatic: Good Read Acknowledgement
Dual Interval Scale	Minimum Increment: Range 1: 0.002 kg / 0.005 lb; Range 2: 0.005 kg / 0.010 lb Scale Capacity: Range 1: 0 - 6.0 kg / 0 - 15.0 lb; Range 2: 6.0 - 15.0 kg / 15.0 - 30.0 lb
Single Interval Scale	Minimum Increment: 0.005 kg / 0.010 lb; Scale Capacity: 0 - 15.0 kg / 0 - 30.0 lb

9400i BARCODE SCANNER



SPECIFICATIONS (Continued)

Dimensions	Depth (Below Counter): 10.2 cm / 4.0 in Height (Above Counter): 13.0 cm / 5.1 in Length (By Model): 939401 (Short, Scanner Only): 35.6 cm / 14.0 in 939403 (Medium, Scanner Only): 40.1 cm / 15.8 in 939405 (Long, Scanner Only): 50.8 cm / 20.0 in 939404 (Medium, Scanner/Scale): 40.1 cm / 15.8 in 939406 (Long, Scanner/Scale): 50.8 cm / 20.0 in Width: 29.2 cm / 11.5 in
Indicators	Volume; Supports WAV file formats Visual: Good Read confirmation for all reading planes; Scale center of zero; ScaleSentry event;
Image Capture	Horizontal and Vertical Window: Graphic Formats: BMP, JPEG; Greyscale: 256, 16, 2
Illumination	Multiple Diffused LEDs: Orientation and wavelength optimized for eye comfort
Reading Coverage	Seamless reading of linear and 2D codes in all planes (5 sides plus Customer Service Scanner)
Agency Approvals	The product meets necessary safety and regulatory approvals for its intended use. The Quick Reference Guide for this product can be referred to for a complete list of certifications.
Environmental Compliance	Complies to China RoHS; Complies to EU RoHS; Complies to R.E.A.C.H. - EC1907/2006.
Scanalyzer™ Utility	Scanalyzer On-Screen Programming (OSP) configuration software is available for download at no charge.
OPOS / JavaPOS	Complies to China RoHS; Complies to EU RoHS; Complies to R.E.A.C.H. - EC1907/2006.
Warranty	1-Year Factory Warranty

PD-II 15lb Dual Range



SPECIFICATIONS

Weighing Capacity	0-6 x 0.002 lb 6-15 x 0.005 lb
External Resolution	1 / 3,000: lb/oz
Internal Resolution	1 / 90,000: lb/oz
Display Digit	VFD 6 Digit
Display Designators	Stable, Zero, kg or lb/oz
Interface	USB, RS-232C (25 pin)
Power Source	AC 120V / 60 Hz
Operating Temp	-10°C ~ 40°C / 14°F ~ 104°F
Product Weight	14.8 lbs / 6.7 kg
Approvals	NTEP: COC# 92-174A4 Measurement Canada: AM-5650 (Legal in lbs only)

Orbit Scanner



SPECIFICATIONS

Dimensions (L x W x H)	108 mm x 103 mm x 148 mm (4.3 in x 4.1 in x 5.8 in)
Weight	410 g (14.5 oz)
Input Voltage	5 VDC \pm 0.25 V
Operating Power	472 mA @ 5 V
Standby Power	255 mA @ 5 V
Host System Interfaces	USB, RS-232, Keyboard Wedge, IBM468xx (RS485)
EAS Features	EAS with interlock and integrated RF EAS antenna (EAS model)
Storage Temperature	-40°C to 60°C (-40°F to 140°F)
Operating Temperature	0°C to 40°C (32°F to 104°F)
Humidity	5% to 95% relative humidity, non-condensing
Drop	Designed to withstand 1.2 m (4 ft) drops
Environmental Sealing	Sealed to resist airborne particulate contaminants

Orbit Scanner



SPECIFICATIONS (continued)

Laser	4842 Lux
Imager	100000 Lux
Scan Pattern	Hybrid, Omnidirectional Laser (5 fields of 4 parallel lines) and Area Imager (640 x 480 pixel array)
Scan Speed Omnidirectional	1120 scan lines per second
Scan Speed FPS	30
Scan Angle Horizontal	40.0°
Scan Angle Vertical	30.5°
Symbol Contrast	35% minimum reflectance difference
Pitch, Skew Laser	60°, 60°
Pitch, Skew Imager	60°, 70°
Decode Capability Laser	Reads standard 1D, GS1 DataBar symbologies
Decode Capability Imager	Reads standard 1D, PDF and 2D symbologies
Decode Capability Warranty	Three-year factory warranty

Orbit Scanner



SPECIFICATIONS (continued)

<p>Typical Performance Laser</p>	<p>5 MIL CODE 39: 0 mm – 50 mm (0 in – 2.0 in) 7.5 MIL CODE 39: 0 mm – 150 mm (0 in – 5.9 in) 10 MIL CODE 39: 0 mm – 220 mm (0 in – 8.7 in) 13 MIL UPC: 0 mm – 275 mm (0 in – 10.8 in) 26 MIL UPC-E: 0 mm – 300 mm (0 in – 11.8 in)</p>
<p>Typical Performance Imager</p>	<p>5 MIL CODE 39: 0 mm – 70 mm (0 in – 2.8 in) 13 MIL UPC: 0 mm – 245 mm (0 in – 9.6 in) 6.7 MIL PDF417: 0 mm – 70 mm (0 in – 2.8 in) 10 MIL DATAMATRIX: 0 mm – 75 mm (0 in – 3.0 in) 20 MIL QR: 0 mm – 200 mm (0 in – 7.9 in) 20 MIL C39: 0 mm – 327 mm (0 in – 12.9 in)</p>

UNI-3



SPECIFICATIONS

Model Name	UNI-3 series
Capacity	6kg/2g, 15kg/5g (Dual range) 30kg/10g (single range)
Power Supply	AC100-240V, 50/60Hz
Printing Speed	MAX 100mm/sec
Label Size	W 38 mm to 64mm L 30 mm to 175mm Printing area W 56mm
Label Roll Size	Outer diameter Φ 100mm or less Inner diameter Φ 40mm \pm 1mm
Use Conditions	Temperature:-5 to 40°C Humidity:20 to 85% No condensation
Input/Output	LAN x 1 USB x 1 Drawer x 1

UNI-5 B



Customer Side



Retail Side

SPECIFICATIONS

Model Name	UNI-5 B
Max. Capacity	6/ 15kg, 15/ 30kg
Division	2/ 5g, 5/10g
Min.	40g, 100g
Tare	5.998kg, 14.998kg
Resolution	8 dots/ mm
Speed	80/ 100/ 120/ 150 mm/sec
Image printing	Max. 3 label format
Barcodes	EAN/UPC 8/12/13, ITF, GS1 Databar/Limited/Expanded, CODE128, EAN128
Customisable label formats	999
Label printing	Die-cut labels and/or continuous paper
Max. printing width	56mm
Max. printing height	200mm
Stepper motor	Forward and backward drive

UNI-5 B



Customer Side



Retail Side

SPECIFICATIONS (continued)

Driving mechanism	Toothed belt
Thermal head replacement	Ishida Quick Head Replacement (no tools required)
Min. width	38mm
Max. width	64mm (including backing paper)
Min. height	38mm
Max. height	200mm
Operator side	7" colour touch panel
Customer side	7" gray scale panel
Display Type	4-wire resistive
Max. pages	99
Keyboard	Fully programmable category/ group/ function/ sub-total pages
Keyboard type	Membrane
Numeric	0-9 keys, 00 key programmable
SRAM	4MB

UNI-5 B



Customer Side



Retail Side

SPECIFICATIONS (continued)

SDRAM	64MB
Flash memory	32MB
*USB	2GB
Sales modes	Weight/ fixed price/ 100g/ weight and fixed price
Dates	1 x Pack date, 2 x expiry dates
Time	1 x Pack time, 2 x expiry times
Other settings	Tare, VAT, department, group barcode format, traceability, fidelity points, deposit/link, 1st and 2nd label format, 3 images for printing, 1 display image, 1 safe handling image
Traceability Type	I (manual input) and II (scanner input)
Pr-defined	34 formats
Customisable	Indefinite
Receipt totals	Daily/ weekly/ cumulative
Pre-pack totals	Daily/ weekly/ cumulative
RS232C	1

UNI-5 B



Customer Side



Retail Side

SPECIFICATIONS (continued)

RJ485	1
USB	1 (ver 1.0)
Ethernet	1 (100Mbps auto-duplex)
*Wi-Fi	1
*Barcode scanner	Serial or ethernet
Range	100 - 240V 50/60Hz
Permissible tolerance	+/- 10%
Operational environment	Min. +5°C (41°F), Max. +35°C (95°F), 20% - 85% R.H.

Dell 20 Monitor - E2020H



SPECIFICATIONS

Display Type	LED-backlit LCD monitor / TFT active matrix
Panel Type	TN
Pixel Pitch	0.27 mm
Contrast Ratio	1000:1
Response Time	5 ms (gray-to-gray)
Screen Coating	Anti-glare
Dimensions (WxDxH)	18.6 in x 6.7 in x 14.5 in - with stand
Diagonal Size	20"
Aspect Ratio	16:9
Pixel Per Inch	94
Color Support	16.7 million colors
Horizontal Viewing Angle	170°
Backlight Technology	LED backlight
Weight	6.79 lbs
Viewable Size	19.5"

Dell 20 Monitor - E2020H



SPECIFICATIONS (continued)

Native Resolution	1600 x 900 at 60 Hz
Brightness	250 cd/m ²
Pixel Pitch	0.27 mm
Color Gamut	72% (CIE 1931), 83% (CIE 1976)
Vertical Viewing Angle	160°
Features	Flicker Free technology, Dell ComfortView

HIT PLUS / RAPIDO

15" MONITOR ADD ON



15" Touch Monitor

SPECIFICATIONS

Display	15", 1024 X 768, 24Bit, Luminance : 350 cd/m ² , Backlight : LED
Touch Panel	15", Projective Capacitive Touch (Bezelless type)
HDMI	1EA(Intel® HD Graphics)
LAN	1EA(RealTek RTL8111H Gigabit LAN)
USB	USB 3.0 X 4EA(I/O), USB 2.0 X 2EA(Rear)
Audio	1 EA (Line-Out)
Speaker	1 EA (1W)
Cooler & Fan	Fanless
Power Adaptor	60[W] Adaptor, Input AC 100~240V/50~60HZ, DC 24V/2.5A (DIN 3-Pin)
Dimension (mm)	480(W) x 460(H) x 310(D) (BOX)
Weight	16.7 million colors

HIT PLUS / RAPIDO

DUAL DISPLAY ADD ON



9.7" Touch Monitor

SPECIFICATIONS

Dual Display	9.7"/15", TFT-LCD,1024 x 768,LED panel(Non-touch/PCAP Touch)
Customer Display	CDP Type 20Characters x 2 Lines (Serial RS-232)
Secure Card Reader	EMV1, EMV2, MSR ISO Track1/2/3
Magnetic Wipe Reader	Dual-Track(1&2) or Triple-Track(1&2&3) (USB)